

Tyre changer for HEAVY MILITARY VEHICLES with wheels equipped with internal support ring.

- i** Tyre changer meant to disassemble and assemble the internal hard-rubber toroidal support of Run Flat tyres of heavy military vehicles wheels with security inner ring.

NEW

**TOR-X**



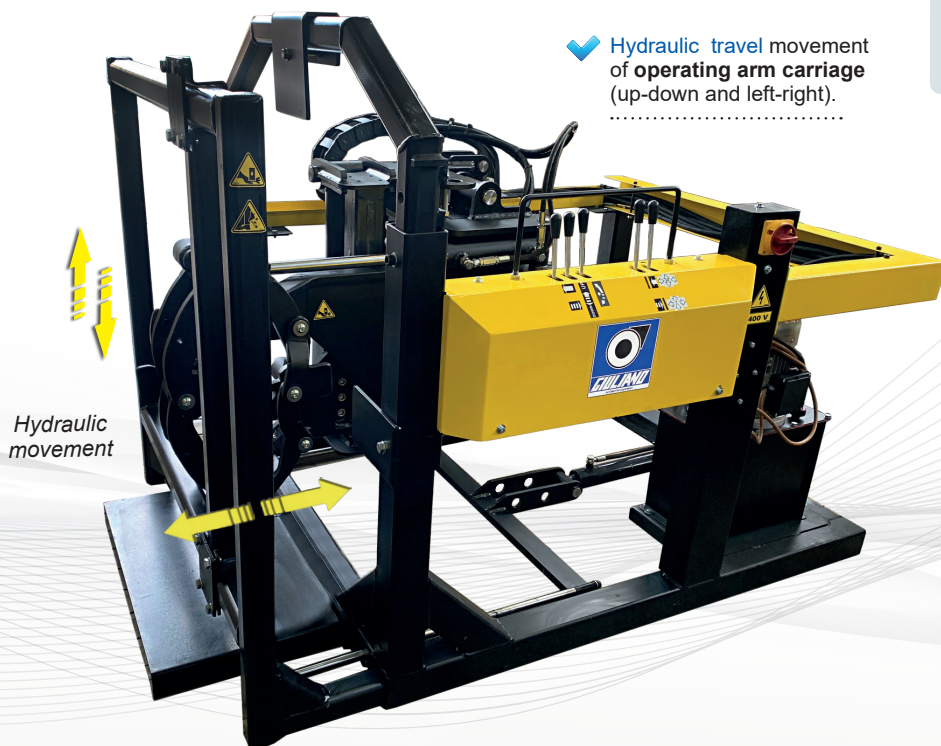
## HEAVY DUTY TYRE CHANGER FOR HEAVY MILITARY VEHICLES EQUIPPED WITH RUN-FLAT TYRES WITH REINFORCED RUBBER INNER RING



- 💡** The standard equipment enables **quick** and **effortless** removal of the **solid band** anchored to the rim inside military and armored tyres.

**Solid band anchored to the rim inside military and armored tyres**

- ✓ **Hydraulic travel** movement of **operating arm carriage** (up-down and left-right).



Hydraulic movement

**YouTube**

Watch the video



COMING SOON



TOR-X

[www.giuliano-automotive.com](http://www.giuliano-automotive.com)

Efficient and space-saving machine.



- ✓ Mount-demount tool (expanding puller) **automatic** rotation, compression and expansion.

- ✓ Operated by simple and intuitive **control console** with joysticks.

**No need** to lift or twirl the pneumatic+toroid assembly.

**No need** to touch the pneumatic + toroid assembly during the extraction and insertion phases.

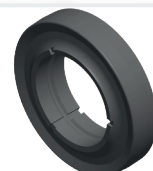
- ✓ Designed, built and engineered in Italy.



- ✓ The **powerful electro-hydraulic** control unit included in the TOR-X structure guarantees **total working autonomy**.



The machine allows with **ease** and **safety** the **extraction** and the **insertion** of the **toroid**, both managed by the operator with appropriate controls on board.



**High Performance Run-Flat with Reinforced Rubber**

**Quick** and **effortless** removal of Run-Flat with Reinforced Rubber.



### STANDARD FEATURES

Wheel clamping range	16" - 24"
Max. wheel diameter	1400 mm
Max. wheel width	620 mm
Max. outer toroid diameter	38"
Min. inner toroid diameter	16"
Max. spreader power	77000 N
Operating pressure	200 bar
Power supply	400V 3Ph 50Hz
Pump motor power	3 Kw
Net Weight	798 Kg
Max. wheel weight	1500 Kg
Overall dimensions	1400x1800÷1940x1300 H

\* Other voltages and frequencies available upon request