

# DF 40



C O M P A C T  
E X T R A C T O R

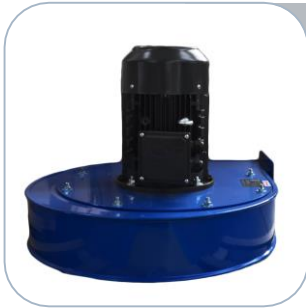
## TECHNICAL DATA

	Units	DF 40
<b>Suction type</b>		Fan
<b>Power</b>	kW-HP	4 – 5,5
<b>Voltage   Frequency</b>	V   Hz	400   50/60
<b>IP   Insulation class</b>		55   F
<b>Maximum vacuum</b>	mm/H <sub>2</sub> O	321
<b>Maximum air flow</b>	m <sup>3</sup> /h	2200
<b>Inlet</b>	Ø mm	150
<b>Noise level – (EN ISO 3744)</b>	dB(A)	76
<b>Bin capacity</b>	Lt	65
<b>Dimensions</b>	mm	630 X 1100
<b>Height</b>	mm	2150
<b>Weight</b>	Kg	145
<b>Primary filter</b>		
Type		Pocket filter
Surface area (Class EN 603335-2-69)	cm <sup>2</sup>	45.000 M
Media		Polyester
Filter cleaning		Manual shaker
<b>SP filter cleaning – Optional</b>		
Surface area (Class EN 60335-2-69)	cm <sup>2</sup>	120.000 M
Media		Polyester cartridge
Filter cleaning		Reverse jet



# DF 40

## SUCTION UNIT



The suction is generated by a Made in Italy fan designed to guarantee the best air flow performance maintaining good depression level.

## INLET DEFLECTOR



The inlet deflector is designed to stop the particles and slide these down into the container. The inlet permits to fit different diameter  $\varnothing$  100,  $\varnothing$  150,  $\varnothing$  180,  $\varnothing$  200. It is just necessary to order the right reduction on the unit.

## M CLASS FILTER



The filtration is guaranteed by a M polyester class filter. The star shape permits the passage of the air also when the filter is dirty. The textile of the filter is in M Class (BIA | EN 60335-2-69). It means that all particles till 1 micron are stopped by the filter so as to protect the motors and the operator around the vacuum cleaner.

## COLLECTION BIN



The collected material is stocked inside a sturdy steel container. Behind the vacuum cleaner there is a metal handle that permits to drop down the bin. The bin can be easily moved away because it is equipped by 4 pivoting industrial wheels. Each wheel is located on a reinforced support to guarantee the best stability during the movement, also when the container is full.

## AVAILABLE OPTIONAL

<b>ANT M</b>	Antistatic filter (M class EN 60335-2-69)
<b>PTFE</b>	PTFE filter (M class EN 60335-2-69)
<b>PTFE ANT</b>	Antistatic PTFE filter (M class EN 60335-2-69)
<b>NOMEX</b>	250° Celsius resistant filter
<b>ABC</b>	Active carbon filter
<b>BX</b>	Stainless steel bin AISI 304
<b>GX</b>	Stainless steel bin AISI 304 and chamber
<b>GRD</b>	Grounding

## FILTER CLEANING SYSTEM AVAILABLE ON REQUEST



The SP Option is the best automatic filter cleaning system which uses compressed air at 6bars to clean the cartridges. Thanks to its big surface and very high efficiency, it is possible to work also with huge quantities of fine dust. The filters are aluminated and antistatic, with BIA-M class filtration (EN 60335-2-69). The filter cleaning works when the vacuum cleaner is running.



The PSC system is a semiautomatic filter shaker. Inside the filter chamber there is a pneumatic piston which shakes the filter each time the operator pushes the activation button. As an option it is possible to install a PLC to have a complete automatic cycle.