

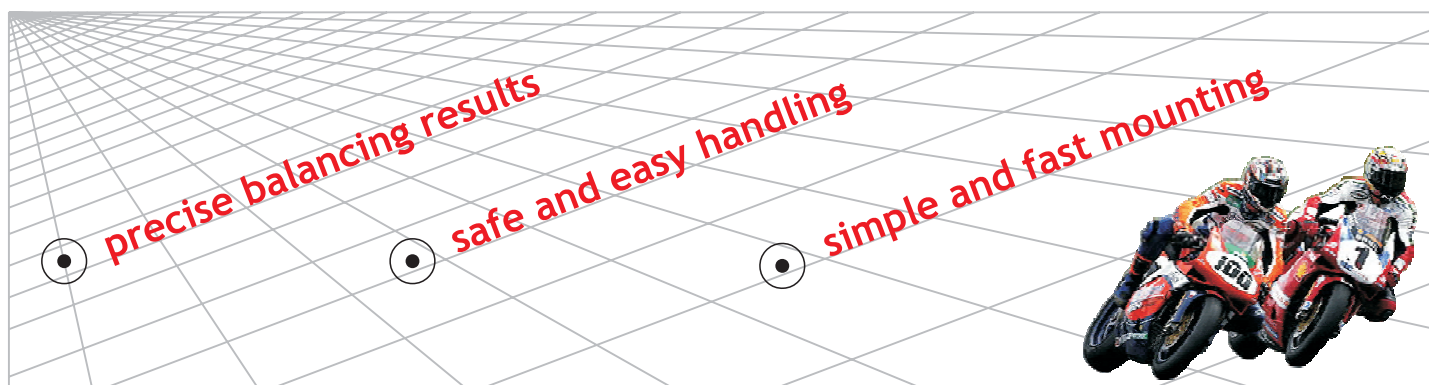
Motorcycle Clamping Device ProBike II - Series 805

Now also includes
possibility for
Scooter
wheels



- optimised machine connection
- new design
- wider clamping range, now for 10" rims
- mounting of Scooter wheels without Scooter adaptors!
- additional centering kits available
- no spacer between backplate and motorcycle base plate necessary
- modular upgrade kits

The motorcycle clamping devices and the large number of accessories developed and manufactured by **HAWEKA** allow both static and dynamic balancing of motorcycle wheels. The clamping device ProBike has been constantly improved during the last years. The ProBike Motorcycle Clamping Device therefore offers you:



Motorcycle Clamping Device



Modular System ECO **Part Number** **805 XXX 010**

This new modular system represents the most economic start with the Pro Bike Version II. It consists of the new Pro Bike base plate including chuck when necessary and a 14 mm motorcycle shaft, as well as centering cones, spacers and pin spanner.

Modular System BASIC **Part Number** **805 XXX 011**

The modular system BASIC is an enlarged version of the modular system ECO. With additional centring sleeves from 15 to 28 mm, this version offers the possibility to clamp perfectly special motorcycles according to their centre bore diameter.

Modular System STANDARD **Part Number** **805 XXX 000**

With the ProBike **STANDARD** system, you are now able to balance a great variety of motorcycle wheels. It now also includes an adaptor board and the new QuickFix (Ø 14 mm) Clamping device. The new adaptor board is smaller and requires less space. It can be upgraded with the adaptor board **PROFESSIONAL**.

Depending on the balancer there are two different types of adaptors available to install the system to the machine. The necessary adaptor has to be selected when purchasing the system.



- centering cones
- 14 mm motorcycle shaft
- centering sleeves 15 - 28 mm
- QuickFix Ø 14 mm
- Adaptor board Standard

Modular System PROFESSIONAL **Part Number** **805 XXX 001**

The ProBike Standard can be upgraded with the modular system **PROFESSIONAL**.

It has become more individual in handling and offers the possibility to balance even more mono lever motorcycle wheels. New in this kit is the QuickFix for 19 mm motorcycle wheels. A newly designed adaptor board is part of this kit.



Upgrade Kit for Monolever Wheels

- 19 mm motorcycle shaft
- centering sleeves up to 35 mm
- special centering kits for mono lever wheels
- QuickFix Ø 19 mm
- Adaptor board professional

Modular System EXPERT **Part Number** **805 XXX 002**

With the Pro Bike modular system **EXPERT**, you are the expert in balancing motorcycle wheels. The additional motorcycle shafts included in this kit will give you perfect balancing results. The kit includes a hanging bracket which can easily be fixed to the adaptor board included in the modular system professional.

Upgrade Kit Motorcycle Shafts

- 9 additional motorcycle shafts (Ø 10, 12, 15, 16, 17, 20, 22, 25, 28 mm)
- distance sleeves in different diameters and length

Modular System - ProBike II



Special Centering Kits

You now own the ProBike modular STANDARD, and want to balance motorcycles with mono lever wheels. In this case you will need the modular system PROFESSIONAL, in which all the special centering adaptors are included. Should you require only one special centering adaptor, this can also be purchased individually.

APRILIA

RST Futura

BMW

F 650 CS Scarver

For rear wheels

1 x Centering Kit: P/No. 860 190 012



BMW

R 850 C, R, GS

R 100 Mystic

R 100 R, RT, PD Classic

R 1100 GS

R 1100 R, S, RT, RS

R 1150 GS, RT

R 1150 GS Adventure

R 1150 R Rockster

R 1200 C

R 1200 C Independent

For rear wheels

1 x Centering Kit: P/No. 860 141 005

R 1200 GS

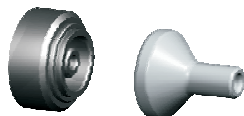
K 75 RT

K 1100 LT, RS

K 1200 GT, LT, RS



Shaft Ø 14 mm



In order to use any of the special adaptors, a 19 mm motorcycle shaft and the 19 mm QuickFix are required! They are included in the Professional Upgrade Kit.

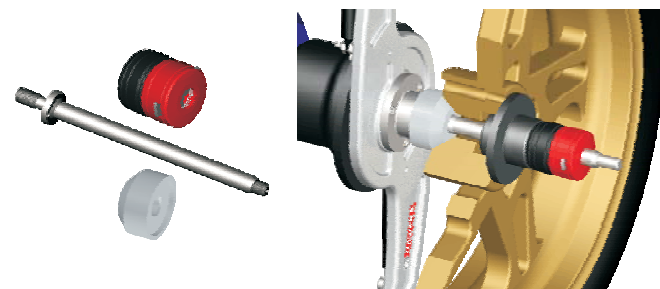
Part No. = 890 190 001 QuickFix 19 mm

Shaft depending on type of balancer:

Part No. 870e010 190 = cylindrical attachment

Part No. 870e997 190 = conical attachment

Part No. 850e190 001 Pressure Piece for Kits with *



HARLEY DAVIDSON

Bad Boy

Heritage Springer

Dyna Super Glide

Softail Deuce

Softail Standard

Dyna Wide Glide

Softail Springer

Sportster 883 ST

Sportster1200Custom

Sportster 1200 Sport

Sportster 1200

Fat Boy

Heritage Softail Classic

Dyna Glide Low Rider

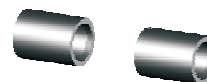
Softail Custom

Night Train

Dyna Glide Conv.

Electra Glide Classic

Sportster 883 Hugger



For front and rear wheels

1 x Set of Spacers: P/No. 860 190 007

DUCATI

(Three Spoke Rim)

748

748 BIPOSTO

916

916 BIPOSTO

(Five Spoke Rim)

748 R

748 S

996 (all types)

998 (all types)

For rear wheels (to be used face and back!)

1 x Centering Sleeve: P/No. 860e190 004*

TRIUMPH

Sprint ST

Speed Triple

Daytona 955 i

T 509

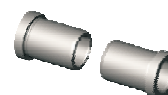


HARLEY DAVIDSON

V-Rod

For front and rear wheels

1 x Set of Centering Sleeves: P/No. 860 190 014



SUZUKI

GSX-R 600

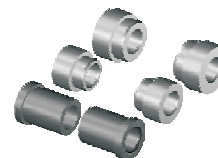
GSX-R 750

GSX-R 1000

GSX R 1300 HAYABUSA

For front and rear wheels

1 x Set of Centering Sleeves: P/No. 860 190 009



MV AGUSTA

F4 750

750 Brutale

VFR V-TEC

For rear wheels (to be used face and back!)

1 x Centering Sleeve: P/No. 860e190 011*

HONDA

VFR 750

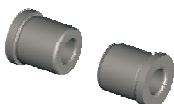
VFR 800



For front wheels **MV AGUSTA**

1 x Set of Centering Sleeves:

P/No. 860 190 350

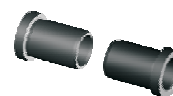


SUZUKI

GSF 1200 Bandit

For rear wheels

1 x Set of Centering Sleeves: P/No. 860 190 240



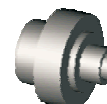
HONDA

Goldwing 1800

NTV 650

For rear wheels

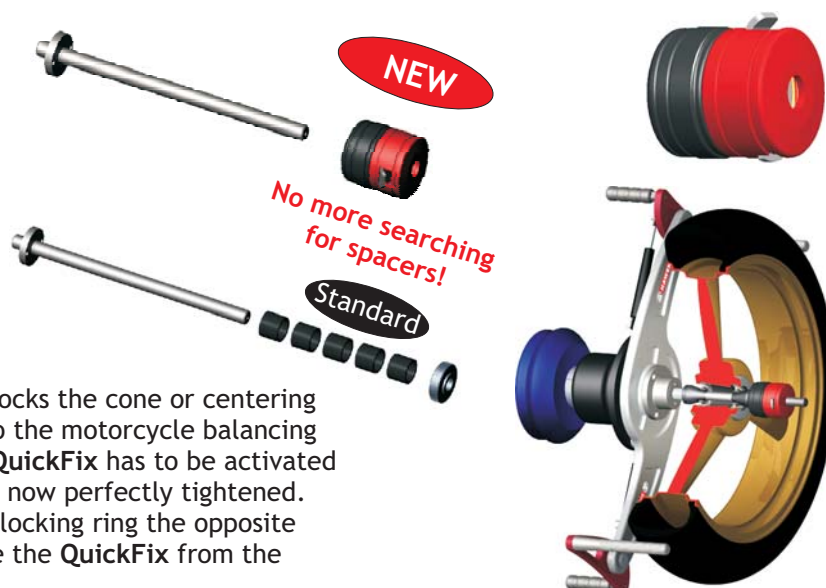
1 x Centering Sleeve: P/No. 860e190 008*



The **QuickFix** can be used for all ProBike motorcycle clamping devices with a 14 mm, respectively a 19 mm motorcycle shaft.

The clamping of motorcycle wheels is made much easier by the use of this innovative adaptor.

The **QuickFix** is slid onto the shaft and locks the cone or centering sleeve into place to tighten the wheel to the motorcycle balancing adaptor. The locking mechanism of the **QuickFix** has to be activated by turning the locking ring. The wheel is now perfectly tightened. After the balancing procedure, turn the locking ring the opposite way, press the rocking lever, and remove the **QuickFix** from the



ProBike II

| Part No. | Description |
|---|--|
| Motorcycle Clamping Device - for conical shafts | |
| 805 818 010 | ProBike II Modular System ECO |
| 805 818 011 | ProBike II Modular System BASIC |
| 805 818 000 | ProBike II Modular System STANDARD |
| 805 818 001 | ProBike II Upgrade Kit Modular System PROFESSIONAL |
| 805 818 002 | ProBike II Upgrade Kit Modular System EXPERT |
| Motorcycle Clamping Device - Power Clamp | |
| 805 995 010 | ProBike II Modular System ECO |
| 805 995 011 | ProBike II Modular System BASIC |
| 805 995 000 | ProBike II Modular System STANDARD |
| 805 995 001 | ProBike II Upgrade Kit Modular System PROFESSIONAL |
| 805 995 002 | ProBike II Upgrade Kit Modular System EXPERT |
| Motorcycle Clamping Device - cylindrical shafts 28 mm | |
| 805 280 010 | ProBike II Modular System ECO |
| 805 280 011 | ProBike II Modular System BASIC |
| 805 280 000 | ProBike II Modular System STANDARD |
| Motorcycle Clamping Device - cylindrical shafts 36 mm | |
| 805 360 010 | ProBike II Modular System ECO |
| 805 360 011 | ProBike II Modular System BASIC |
| 805 360 000 | ProBike II Modular System STANDARD |
| Motorcycle Clamping Device - cylindrical shafts 38 mm | |
| 805 380 010 | ProBike II Modular System ECO |
| 805 380 011 | ProBike II Modular System BASIC |
| 805 380 000 | ProBike II Modular System STANDARD |
| Motorcycle Clamping Device - cylindrical shafts 40 mm | |
| Cemb / Hunter / TipTop / Hofmann Megaplan / Ravaglioli | |
| 805 400 010 | ProBike II Modular System ECO |
| 805 400 011 | ProBike II Modular System BASIC |
| 805 400 000 | ProBike II Modular System STANDARD |
| Motorcycle Clamping Device - cylindrical shafts 40 mm | |
| Corgi / Mondolfo / HPA / TECO (neu 01.07) | |
| 805 401 010 | ProBike II Modul ECO |
| 805 401 011 | ProBike II Modul BASIC |
| 805 401 000 | ProBike II Modul STANDARD |
| Motorcycle Upgrade Kit - cylindrical shafts 28 - 40 mm | |
| 805 008 001 | ProBike II Modular System PROFESSIONAL |
| 805 008 002 | ProBike II Modular System EXPERT |
| Clamping Device Quick Fix for Series 802 / 805 | |
| 890 140 001 | Quick Fix for 14 mm shaft |
| 890 190 001 | Quick Fix for 19 mm shaft |